

Your Partner for Power...



DIESEL GENERATOR SETS

POWERlink
Power Systems

www.powerlinkworld.com
E-mail: info@powerlinkworld.com

More information:



NTOES:

PowerLink reserves the right to make change technical specification .color .configuration and accessories without prior notice. Please contact your sales before ordering.

April, 2020 NO. PLBR202004EN50D

POWERlink
Power Systems

50 Hz
5-2500kVA

CONTENTS

- 01** Open sets
- 05** Sound proof sets
- 09** Containerised generator sets
- 13** Control system
- 15** Specifications
- 27** Parts

ABOUT US

PowerLink, founded in 2001, is a professional manufacturer of diesel generators, gas generators, diesel lighting units and mobile air compressors. PowerLink energy solutions can provide more choices. PowerLink UK factories and PowerLink China factories can provide fast delivery for users worldwide. More than 80, 000 generators have been delivered to users in more than 100 countries. Our product family Includes four energy series: diesel generator set, gas generator set, air compressor, lighting tower, which can meet different standards. According to the needs of users, customized products can also be provided for users. Headquartered in Shanghai, PowerLink Group have manufacturing factories in China and the United Kingdom, and warehouses and sales centers in the United Kingdom, Australia and other countries to provide rapid solutions for product manufacturing, sales and technical services.



OPEN SETS



Start motor



Anti-Vibration Mounts



Air filter



Battery



Radiator



Charger

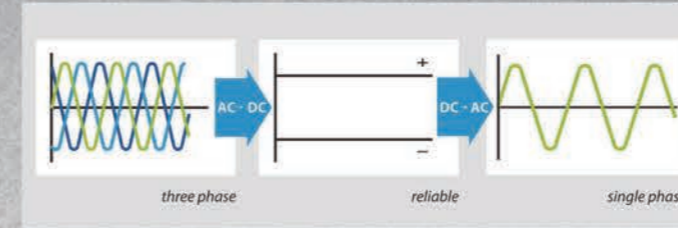
Based on the superior engines provided from Perkins, Cummins, Kubota, John Deere, Volvo and Mitsubishi, with an integrated exhaust system, oil feed, cooling system and control unit, we are achieving a complete unit with reliable performance. Open Set diesel generators for emergency standby power are manufactured and installed inside existing generator rooms or within 'new build' sites.

Equipments Standard and Optional

Category	Equipment	Status
Canopy	Mounted soundproof canopy	●
	Soundproofed canopy kit	●
	Modular sheet steel structure	●
	Phosphate priming followed by anti-corrosion polyester powder coat	●
	Flexible seals between body section	●
	Bnc connector plugs	●
	Standby bnc connector plugs	○
Acoustic Equipments	Silencer inside canopy (for Industrial)	●
	Two doors on each side (for Residential)	○
	Exhaust outlet with flexible	●
	Silence cotton inside canopy	●
	Emission purifier	○
Easy Maintenance Access	One door on each side	●
	Two doors on each side	●
	Lube oil drain pump	●
	Radiator fill access plate	●
Base	Electric panel door	●
	Base girder	●
	Inbuilt fuel tank or base tank	●
Lifting	Automatic fuel fill kit for frame tank	●
	Fabricated all welded baseplate with anti-vibration mountings	●
	Central lifting eye (U type lifting point)	●
Safety	Baseplate with retention tank	●
	Simple baseplate	●
	Lockable door with single key	●
	Lockable control panel	●
	Exterior emergency stop button	●
	Access to fuel, oil and battery through lockable doors	●
	Protective mesh for rotating parts	●
	Galvanised sheet metal air outlet duct	○
	Low voltage protection	○
	Over current protection	●
Grounding protection	●	

● : standard ○ : optional

OPEN SETS



Control System	AMF	Low oil pressure	speed	freq.	Emergency stop	temp.	current	Fail to start	volts
PLC-920	x	STD	STD	STD	STD	STD	STD	STD	STD
PLC-7420	STD	STD	STD	STD	STD	STD	STD	STD	STD
PLC-8610	x	STD	STD	STD	STD	STD	STD	STD	STD

Note:
 1. A PLC-7420 or a PLC-920 is the standard configuration, while PLC-8610 is optional and is used for automatic parallel operation.
 2. Applicable voltmeter, ampere meter and some other meters are indispensable for the PLC-920 system.

EP Series

Engine Brand: Perkins

kVA 9-2250kVA

1500 rpm Rated speed



Circuit Breaker

Electric Start

DC.12/24V



EC Series

Engine Brand: Cummins

kVA 30-1500kVA

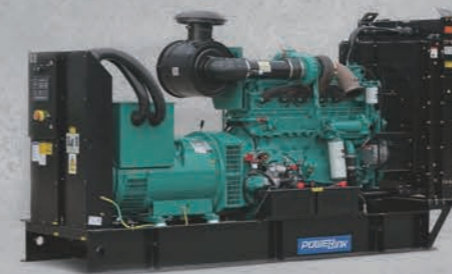
1500 rpm Rated speed



Circuit Breaker

Electric Start

DC.12/24V



WCS Series

Engine Brand: Cummins

kVA 110-3250kVA

1500 rpm Rated speed



Circuit Breaker

Electric Start

DC.12/24V



RP Series

Engine Brand: PowerLink

kVA 15-2250kVA

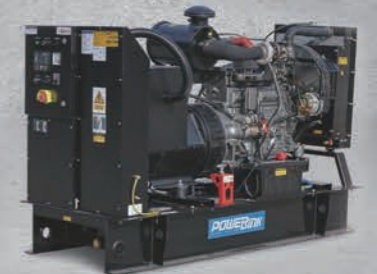
1500 rpm Rated speed



Circuit Breaker

Electric Start

DC.12/24V



SOUND PROOF SETS



The investments made by PowerLink in the expansion and modernisation of the production facilities enables sufficient capacity for our customers' orders and any related peaks in demand. Quality reflected in the design and development of components. Cooperation with first-class suppliers such as Perkins engines and Cummins engines is an additional quality trademark.

SOUNDPROOF SETS

Many advantages securely keeping the power going...

Robust engine, stable performance

- Engines with excellent properties
- Ambient temperature from -25 C to 50 C
- Excellent filtration system
- High efficient alternator with full damper windings, which ensure a stable voltage, and quick recovery from frequency fluctuation whenever there is instant uploading
- Time between maintenance and service are maximized

High security

- All the design, production and tests are compliant with CE standards
- E-stop button and all breaker protections prevent potential danger
- Double-banded base fuel tank ensure no fuel leakage
- Fully equipped with heat insulation and protective covers to give added protection from areas of high temperature.
- Clear and easy to follow signs to identify cable connection points
- Full suspension allowing units to be taken over rough terrain
- Units have easy towing facilities

Soundproof and waterproof canopy which can be used outdoor

- Soundproof design reduce noise by 20-35db (A)
- Canopies are made and coated by motor vehicles materials, Which are robust and durable, with a tidy appearance
- Excellent silencer and sound insulation materials
- Low emissions

Easy to operate and maintain

- Convenient for fuel and water filling
- Wide maintenance doors allow full access to check and carry out maintenance (Gensets above 250KVA are built with ladders)
- Gensets are easy to transport
- The control system is easy to operate
- Simple for connection
- All running data is available to find out on control system



Adaption of **DeepSea** control panel intergrated for the most convenient operation by the engineer.



The water re-filling cap on the **top of the canopy** makes it convenient to input water.



Fuel cap at the side enables refilling to be easier when there is a need to refill during operation.



Double banded base fuel tank (Please see our technical specification for large fuel tanks on capacity etc)



The inner door panel is lined with **fire retardant & sound absorbing cotton**. Fully sealed rubber material around the door frame to isolated the heat/sound.



The **air filter** can adopt double-element, which can be used in larger occasions.



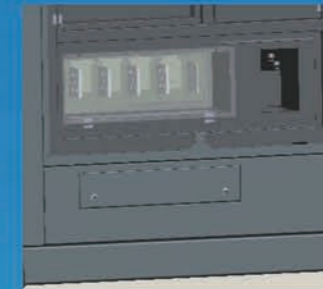
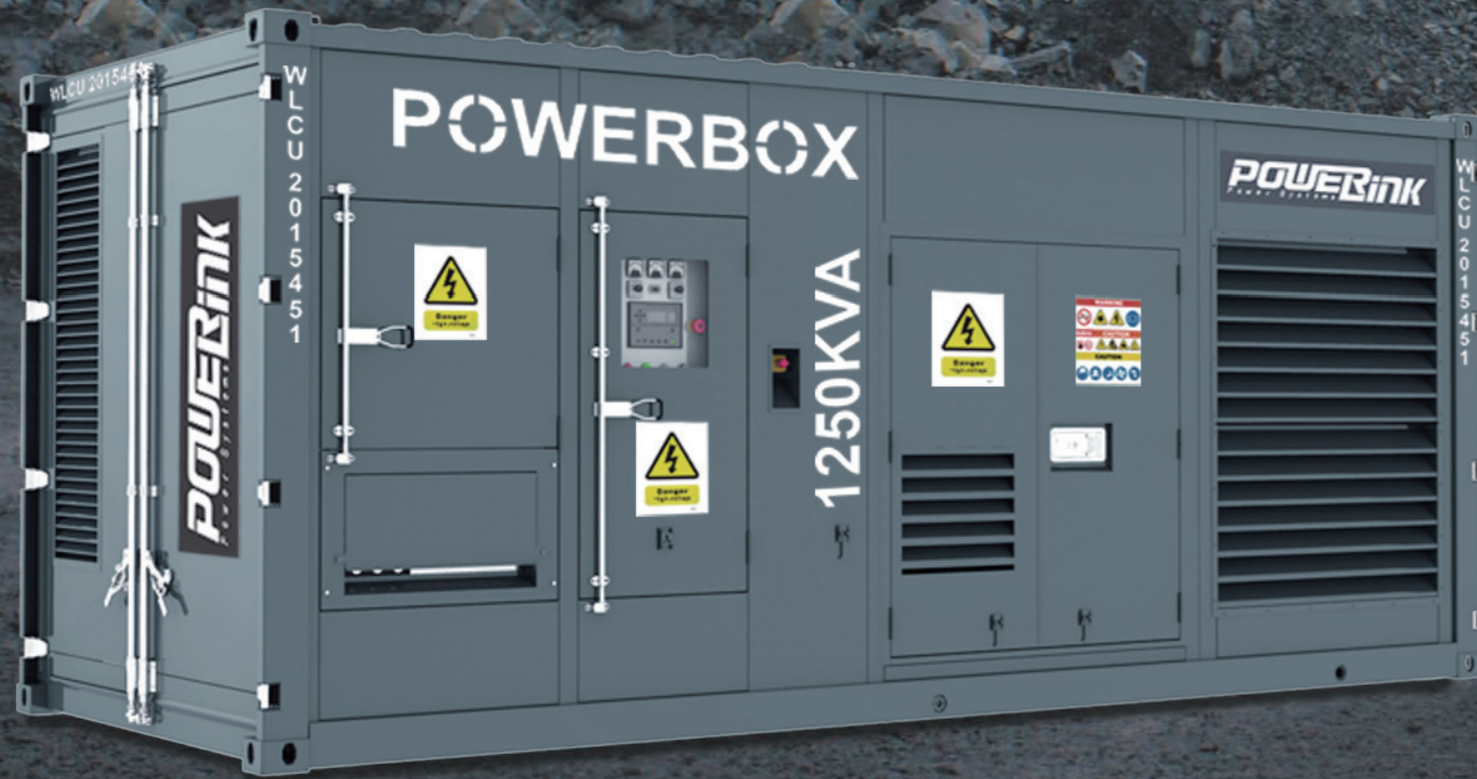
Advanced **AVM** device significantly reduces vibration during operation, ensuring stable operation of the genset.



The design meets the requirements of EU legislation 2000/14/EC.

CONTAINERISED GENERATOR SETS

EASY MOUNTED
EASY OPERATION
EASY TO MAINTAIN
HIGH RELIABLE



Wiring Terminals

Humanised design makes it easy for the wiring connection and distribution
Visual insulation design secures against unintentional switch-on



Cooling fan

Axial flow design
Large flux and quick discharge
Low noise



Radiator

Double vertical distribution
Copper material makes a good cooling performance
Large cooling area makes a quick cooling.



Automatic fuel refilling system

Auto/manual selection protection setting of fuel pump
No need to be present on site



High resistance against harsh environment

With canopy made of galvanized electrolyte board for car use only, it is rustproof for over 5 years. With high protection grade of control panels, access doors and standby boards, the generator is suitable to protect against strong wind and rusts.



The complete solution

No matter on continuous, emergency, standby service or generator power plant application, POWERLINK generator set will satisfy all your demands and provide power solutions for customised products



Work properly in 50 C

Double-chamber design separates the heat sources and makes it compact and work properly in 50°C with the compact configuration.



The integrated design

Internal monitoring, cooling circuit, fuel system, power system, cabling and piping, all of them are designed integrally, 100% matched components, consolidated controls... the only way to ensure total reliability



CONTAINERISED GENERATOR SETS

CONVENIENT REFUELING AND WATERING INSTALLATIONS

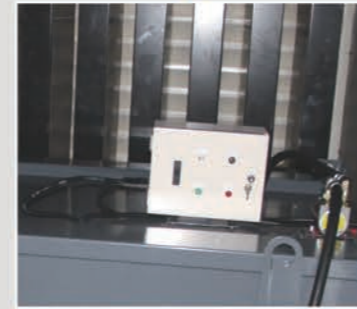
- Outer fuel inlet and coolant inlet.
- The genset is equipped with daily-fuel tank with automatic fuel refilling system.
- Fuel outlet at the base and drainage device.



Multi-stage fuel/water separator



High quality engine



Automatic fueling device



Built-in sound absorbing cotton



Control panel



Interior of the genset

EASY TO MAINTAIN

- The daily maintenance work can be performed on two sides of the machine, and wide doors allow you to easily access to the machine.
- Equipped with a climbing ladder, making it easier for regular maintenance and servicing.

EASY TO TRANSPORT

- Lifting pockets designed at the four corners of the container making it easier to move and transport, which is also convenient element for the rental market.

CONTROL SYSTEM

- Micro-processor cored digital system.
- Option for multiple languages, and has automatic controls

CONVENIENT CONNECTION

- An optional external quick connection panel can aid in the monitoring of mains, ATS transfer, and remote start.



CONTROL SYSTEM

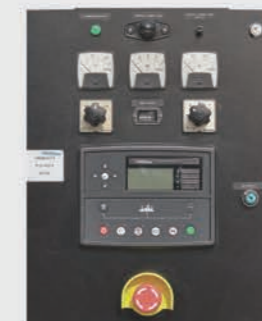


Powerlink generator controllers integrating digital, intelligent and network techniques are used as the automatic control systems for diesel generators. It can carry out functions including automatic start/stop, data measuring and alarms.



● PLC-7420

Upon detection of a mains (utility) failure the module automatically starts the generating set. Once the mains (utility) power has been restored it instructs the generator set to stop.



● Paraller Controller

By using inbuilt device with synchronisation, power matching and paralleling functions, the controller can be synchronised with mains, uninterruptedly returning when reaching the peak.



● PLC-920

PowerLink PLC-920 controllers integrating digital, intelligent and network techniques are used as the automatic control systems for diesel generators. It can carry out functions including alarms, warning & electrical trip, genset failure monitoring and controls etc.

EP Series 9-2250kVA



Specification and Configuration

Three-phase 50Hz.1500RPM

Model Type ^{<1>}	Specification 50Hz 400/230V ^{<2>}					Engine Specification				Open Sets		Soundproof Sets		
	Power (kVA)		Power (kW)		Cons. (100%load) (L/h)	Engine Model	Cyl.	Gov. ^{<5>}	Asp. ^{<6>}	Dimensions ^{<8>} L*W*H (mm)	Weight (Kg) ^{<7>}	Dimensions ^{<8>} L*W*H (mm)	Weight (Kg) ^{<7>}	Tank (L)
	PRP ^{<4>}	ESP ^{<3>}	PRP ^{<4>}	ESP ^{<3>}										
WPS9/S	9	10	7	8	2.6	403D-11G	3	Mech	N	1388*600*1080	400	1832*880*1308	634	100
WPS13/S	13	14	10	11	3.61	403D-15G	3	Mech	N	1468*600*1118	464	1932*830*1309	717	100
WPS15/S	15	17	12	13	4.1	403A-15G2	3	Mech	N	1493*629*1119	516	1932*830*1309	714	100
WPS20/S	20	22	16	18	5.3	404D-22G	4	Mech	N	1656*630*1216	546	2300*830*1358	947	100
WPS30/S	30	33	24	26	7.1	1103A-33G	3	Mech	N	1761*700*1316	810	2300*1080*1551	1268	180
WPS45/S	45	50	36	40	10.7	1103A-33TG1	3	Mech	T	1896*786*1384	913	2300*1080*1551	1315	180
WPS60/S	60	66	48	53	13.9	1103A-33TG2	3	Mech	T	1971*778*1388	917	2338*1080*1551	1331	180
WPS80/S	80	88	64	70	18.7	1104A-44TG2	4	Mech	T	2233*870*1342	1115	2788*1165*1700	1711	180
WPS100/S	100	110	80	88	22.6	1104C-44TAG2	4	EFC	T	2171*870*1365	1261	2888*1165*1681	1852	240
WPS135/S	135	150	108	120	30.28	1106A-70TG1	6	Mech	T	2602*845*1453	1625	3338*1227*1843	1711	420
WPS150B/S	150	165	120	132	33.4	1106A-70TAG2	6	Mech	T	2690*832*1506	1683	3468*1222*1843	2532	420
WPS180B/S	180	198	144	158	41.6	1106A-70TAG3	6	Mech	T	2662*874*1506	1816	3468*1222*1843	2680	420
WPS200B/S	200	220	160	176	45.8	1106A-70TAG4	6	EFC	T	2714*851*1506	1820	3468*1221*1836	2739	420
WPS250B/S	250	275	200	220	54	1206A-E70TAG3	6	ECM	T	3026*1117*1804	2247	3840*1352*2002	3054	520
WPS300/S	300	330	240	264	64.9	1506A-E88TAG5	6	ECM	T	3970*1362*2102	3439	3970*1362*2102	3421	700
WPS350/S	350	385	280	308	75	2206C-E13TAG2	6	ECM	T	3437*1210*2150	3134	4242*1456*2512	4432	800
WPS400/S	400	440	320	352	85	2206C-E13TAG3	6	ECM	T	3620*1210*2150	3271	4392*1423*2512	4600	800
WPS450/S	450	495	360	396	99	2506C-E15TAG1	6	ECM	T	3852*1150*2124	3711	4592*1563*2562	5135	1020
WPS500/S	500	550	400	440	106	2506C-E15TAG2	6	ECM	T	3888*1167*2144	3877	4592*1535*2555	5265	1020
WPS600/S	600	660	480	528	129	2806A-E18TAG1A	6	ECM	T	3885*1536*2204	7761	4692*1763*2516	6433	1650
WPS625/S	625	688	500	550	132	2806A-E18TAG2	6	ECM	T	3801*1536*2279	4687	4692*1763*2516	6482	1650
WPS750/S	771	850	617	678	148	2806A-E18TAG5	6	ECM	T	5462*2096*2664	9867	4692*1763*2516	7800	1450
WPS725/S	725	798	580	638	161	4006-23TAG2A	6	EFC	T	4389*1706*2252	7444	4800*1600*2450	8500	1450
WPS800/S	800	880	640	704	172	4006-23TAG3A	6	EFC	T	4229*1706*2252	6753	4800*1600*2450	8800	1450
WPS900/S	900	990	720	792	195	4008TAG1A	8	EFC	T	4964*2134*2323	8138	5200*1600*2450	9500	1450
WPS1000/S	1000	1100	800	880	202	4008-30TAG2	8	EFC	T	5112*2134*2445	6599	5200*1600*2450	9500	1450
WPS1125/S	1125	1250	900	1000	220	4008TAG3	8	EFC	T	5112*2134*2445	6599	5200*1600*2450	10000	1450
WPS1250/S	1250	1375	1000	1100	259	4012-46TWG2A	12	EFC	T	5090*2100*2425	9618	6058*2438*2591	15500	2400
WPS1500/S	1500	1650	1200	1320	301	4012-46TAG2A	12	EFC	T	5333*2200*2441	10132	12192*2438*2896	20579	2400
WPS1710/S	1710	1881	1368	1505	370	4012-46TAG3A	12	EFC	T	5486*2200*2576	11115	12192*2438*2896	21149	2400
WPS1750/S	1750	1925	1400	1540	359	4016TAG	16	EFC	T	5486*2200*2576	11115	12192*2438*2896	24500	2400
WPS2000/S	2000	2200	1600	1760	434	4016TAG2A	16	EFC	T	6283*2164*2570	13198	12192*2438*2896	24689	2400
WPS1850/S	1850	2035	1480	1628	381	4016-61TRG1	16	EFC	T	5586*2208*2576	13199	12192*2438*2896	24600	2400
WPS2000/S	2000	2200	1600	1760	385	4016-61TRG2	16	EFC	T	6283*2378*2571	13550	12192*2438*2896	24689	2400
WPS2250/S	2250	2500	1800	2000	473	4016-61TRG3	16	EFC	T	6500*2877*2600	13860	12192*2438*2896	25000	2400

Single-phase 50Hz.1500RPM

Model Type ^{<1>}	Specification 50Hz 400/230V ^{<2>}					Engine Specification				Open Sets		Soundproof Sets		
	Power (kVA)		Power (kW)		Cons. (100%load) (L/h)	Engine Model	Cyl.	Gov. ^{<5>}	Asp. ^{<6>}	Dimensions ^{<8>} L*W*H (mm)	Weight (Kg) ^{<7>}	Dimensions ^{<8>} L*W*H (mm)	Weight (Kg) ^{<7>}	Tank (L)
	PRP ^{<4>}	ESP ^{<3>}	PRP ^{<4>}	ESP ^{<3>}										
PP6/S	6	6	5	5	2.2	403D-07G	3L	E	TCI	1250*600*900	350	1450*750*1100	590	75
PP9/S	9	10	7	8	2.6	403A-11G1	3L	M	NA	1300*600*1000	380	1650*850*1100	635	100
PP10/S	9	10	7	8	2.6	403D-11G	3L	M	NA	1360*630*1080	400	1832*830*1308	670	100
PP13/S	13	14	10	11	3.67	403D-15G	3L	M	NA	1440*630*1120	490	1800*850*1100	720	100
PP15/S	15	17	12	13	4.1	403A-15G2	3L	M	NA	1440*630*1120	490	1932*878*1308	739	100
PP20/S	20	22	16	18	5.3	404A-22G1	4L	M	NA	1560*650*1215	565	2150*900*1200	1000	100
PP30/S	30	33	24	26	7.1	1103A-33G	3L	M	NA	1895*700*1400	730	2250*1050*1250	1280	180
PP45/S	45	50	36	40	10.7	1103A-33TG1	3L	M	TC	1946*826*1418	1035	2500*1050*1450	1350	180
PP60/S	60	66	48	53	13.9	1103A-33TG2	3L	M	TC	1880*800*1380	880	2650*1050*1550	1450	240

<1> The first column of model types, consist of two models , with "WPS100/S" as an example, WPS100 is an open set, and WPS100S is soundproof; <2> Also available in the following voltages: 440/254V-220/127V-208/120V; <3> ESP: Standby Power Standby duty, operation under variable load, without over load; <4> PRP: Prime Power-Continuous duty operation, under variable load 24/24-10% over load permissible 1hour/12hours; <5> M: Mechanical speed governor, E/ECU: Electronic speed governor; <6> NA: Naturally aspirated, TC: Turbocharged, TCA: Turbocharged and air-air aftercooled; TW: Water-cooled Turbocharged; <7> The weights are approximate and without fuel; <8> This data is standard generator dimension and fuel tank capacity, just for reference only; NTOES: PowerLink reserves the right to make change technical specification,color ,configuration and accessories without prior notice. Please contact your sales before ordering.

EC Series 30-1500kVA



Specification and Configuration

Three-phase 50Hz.1500RPM

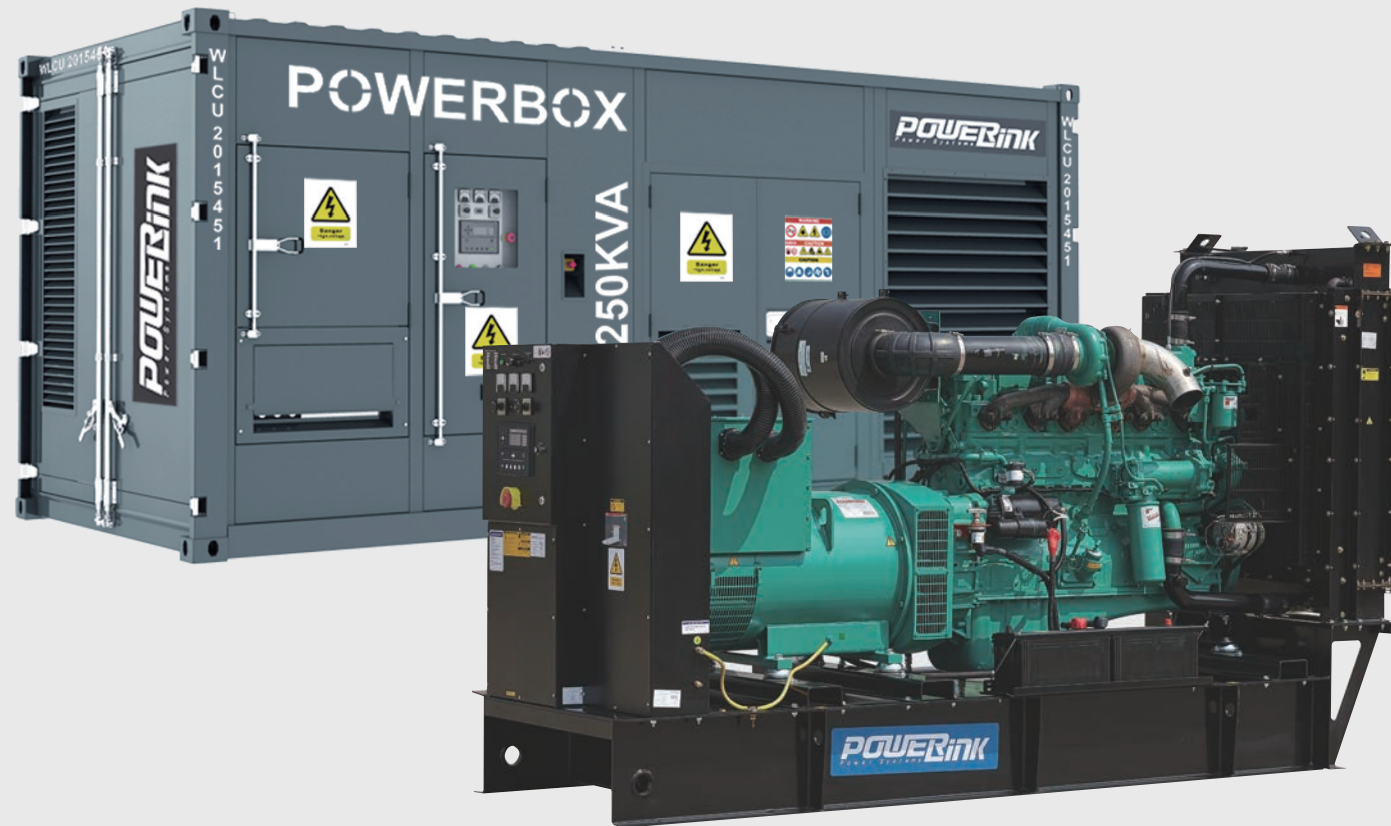
Model Type ^{<1>}	Specification 50Hz 400/230V ^{<2>}					Engine Specification				Open Sets		Soundproof Sets		
	Power (kVA)		Power (kW)		Cons. (100%load) (L/h)	Engine Model	Cyl.	Gov. ^{<5>}	Asp. ^{<6>}	Dimensions ^{<8>} L*W*H (mm)	Weight (Kg) ^{<7>}	Dimensions ^{<8>} L*W*H (mm)	Weight (Kg) ^{<7>}	Tank (L)
	PRP ^{<4>}	ESP ^{<3>}	PRP ^{<4>}	ESP ^{<3>}										
GMS30C/S	30	33	24	26	5.7	4B3.9-G1	4	M	N	1793*789*1213	700	2338*1115*1560	1226	180
GMS42C/S	43	47	34	37	10	4B3.9-G1	4	M	T/W	1995*846*1366	804	2508*1081*1709	1404	180
GMS60C/S	60	66*	48	53	12.9	4BTA3.9-G2	4	E	T/W	2111*790*1426	938	2688*1114*1760	1555	180
GMS80C/S	80	88	64	70	17.6	4BTA3.9-G11	4	E	T/W	2156*881*1495	1201	3162*1172*1971	2120	180
GMS100C/S	100	110	80	88	22.3	6BTS.9-G2	6	E	T/W	2434*863*1500	1236	3142*1212*1712	2064	240
GMS135C/S	135	149	108	119	30	6BTA5.9-G2	6	E	T/A	2635*875*1460	1350	3312*1122*1974	2223	420
GMS150C/S	150	165	120	132	34	6BTA5.9-G12	6	E	T/A	2678*844*1578	1491	3442*1322*1867	2614	420
GMS180C/S	180	199	145	160	42	6CTA8.3-G2	6	E	T/W	2667*834*1675	1750	3438*1300*1868	2629	420
GMS200C/S	200	220	160	176	45	6CTAA8.3-G2	6	E	T/A	2760*950*1637	1844	3588*1322*1840	2693	420
GMS250C/S	250	275	200	220	53	6LTA8.9-G2	6	E	T/A	2842*1030*1851	2074	3662*1322*1958	2872	520
GMS320C/S	320	352	256	282	88.8	6LTA9.5-G1	6	E	T/A	3353*1258*1741	2784	4242*1464*2312	4559	800
GMS380C/S	388	425	310	340	76.5	6ZTAA13-G3	6	E	T/A	3760*1233*1828	3115	4345*1466*2316	4780	800
GMS450C/S	438	481	350	385	88.8	QSZ13-G2	6	E	T/W	3762*1234*1830	3280	4422*1515*2412	4812	1020
GMS500C/S	500	550	400	440	101	QSZ13-G3	6	E	T/W	3574*1459*2086	3713	4520*1635*2386	5280	1020
GMS650C/S	N/A	650	N/A	520	137	KTA19-G8	6	E	T/W	3878*1377*2173	4245	4592*2016*2661	6810	1650
GMS650C/S	650	715	520	572	138	QSK19-G4	6	E	T/A	4065*1683*2386	5347	4842*2017*2691	7662	1650
GMS800C/S	800	880*	640	704*	191	KTA38-G2B	12	E	T/W	4812*1736*2425	7356	6058*2438*2730	11776	1450
GMS900C/S	900	990*	720	792*	191	KTA38-G2A	12	E	T/W	4812*1736*2425	7390	6058*2438*2591	12500	1450
GMS1000C/S	1000	1100*	800	880*	209	KTA38-G5	12	E	T/W	4812*1736*2425	8791	6058*2438*2593	13021	1450
GMS1250C/S	N/A	1250*	N/A	1000	256	KTA38-G9	12	E	T/W	4812*1736*2425	6778	6058*2438*2795	15310	2400
GMS1250C/S	1250	1375*	1000	1100*	261	KTA50-G3	16	E	T/W	5270*2032*2391	9944	6058*2438*2795	15310	2400
GMS1500C/S	1500	1650	1200	1320	309	KTA50-GS8	16	E	#N/A	5531*2108*2562	11576	6058*2438*2795	15310	2400

Single-phase 50Hz.1500RPM

Model Type ^{<1>}	Specification 50Hz 400/230V ^{<2>}					Engine Specification				Open Sets		Soundproof Sets		
	Power (kVA)		Power (kW)		Cons. (100%load) (L/h)	Engine Model	Cyl.	Gov. ^{<5>}	Asp. ^{<6>}	Dimensions ^{<8>} L*W*H (mm)	Weight (Kg) ^{<7>}	Dimensions ^{<8>} L*W*H (mm)	Weight (Kg) ^{<7>}	Tank (L)
	PRP ^{<4>}	ESP ^{<3>}	PRP ^{<4>}	ESP ^{<3>}										
PC22/S	24	26	19	21	7.1	4B3.9-G1	4L	M	NA	1885*695*1400	710	2250*1050*1250	1225	270
PC30/S	30	33	24	26	7.1	4B3.9-G1	4L	M	NA	1895*700*1400	730	2250*1050*1250	1225	290
PC42/S	43	47	34	37	10	4B3.9-G1	4L	M	TC	1978*780*1400	800	2588*1114*1708	1510	270
PC60/S	60	66	48	53	12.9	4BTA3.9-G2	4L	E	TC	2100*800*1440	920	2650*1050*1550	1555	485

<1>The first column of model types, consist of two models, with "WPS100/S" as an example, WPS100 is an open set, and WPS100S is soundproof; <2> Also available in the following voltages: 440/254V-220/127V-208/120V; <3> ESP: Standby Power Standby duty, operation under variable load, without over load; <4> PRP: Prime Power-Continuous duty operation, under variable load 24/24-10% over load permissible 1hour/12hour; <5> M: Mechanical speed governor, E/ECU: Electronic speed governor; <6> NA: Naturally aspirated, TC: Turbocharged, TCA: Turbocharged and air-air aftercooled; TW: Water-cooled Turbocharged; <7> The weights are approximate and without fuel; <8> This data is standard generator dimension and fuel tank capacity, just for reference only; NTOES: PowerLink reserves the right to make change technical specification .color .configuration and accessories without prior notice. Please contact your sales before ordering.

WCS Series 110-3250kVA



Specification and Configuration

Three-phase 50Hz.1500RPM

Model Type<1>	Specification 50Hz 400/230V<2>				Cons. (100%load) (L/h)	Engine Specification				Soundproof Sets		
	Power (kVA)		Power (kW)			Engine Model	Cyl.	Gov.<5>	Asp.<6>	Dimensions<8> L*W*H (mm)	Weight (Kg)<7>	Tank (L)
	PRP<4>	ESP<3>	PRP<4>	ESP<3>								
WCS110/S	100	80	110	83	25	6BTA5.9-G5	6	EFC	T	2800*1172*1755	1983	420
WCS150/S	150	120	150	120	32	6BTA5.9-G6	6	EFC	T	2800*1172*1755	2034	420
WCS168/S	160	128	168	134	37	6BTA5.9-G7	6	EFC	T	2800*1172*1755	2034	420
WCS220/S	200	160	220	176	45	6CTAA8.3-G7	6	EFC	T	3262*1321*1897	3107	420
WCS350/S	320	256	350	280	58	6LTAA9.5-G1	6	EFC	T	3900*1473*2186	3860	700
WCS400/S	380	304	400	320	72	QSG12G1	6	ECU	T	3416*1130*2045	3200	800
WCS450/S	423	338	450	360	82	QSG12G2	6	ECU	T	3418*1130*2050	3289	800
WCS700/S	640	512	700	565	195	VTA28-G5	12	EFC	T	4800*1600*2400	8643	1450
WCS825/S	750	600	825	660	195	VTA28-G6	12	ECM	T	4800*1600*2401	9500	1450
WCS810/S	750	600	810	648	151	QSK23-G2	6	ECM	T	5200*1600*2400	8800	1450
WCS900/S	810	648	900	720	161	QSK23-G3	6	ECM	T	5200*1600*2400	9600	1450
WCS1000/S	910	728	1000	800	184	QST30-G3	12	ECM	T	6058*2438*2795	12937	1450
WCS1100/S	1000	800	1100	880	202	QST30-G4	12	ECM	T	6058*2438*2795	12624	1450
WCS1100/S	1020	814	1122	880	209	KTA38-G5	12	EFC	T	6058*2438*2795	12624	1450
WCS1250/S	N/A	N/A	1250	1000	256	KTA38-G9	12	EFC	T	6058*2438*2836	13257	2400
WCS1400/S	1250	1000	1400	1120	261	KTA50-G3	16	EFC	T	12192*2438*2896	15843	2400
WCS1675/S	1500	1200	1675	1340	309	KTA50GS8	16	EFC	T	12192*2438*2896	16840	2400
WCS2000/S	1875	1500	2000	1650	363	QSK60-G3	16	ECM	T	12192*2438*2896	22500	2400
WCS2250/S	2000	1600	2250	1800	394	QSK60-G4	16	ECM	T	12192*2438*2896	23500	2400
WCS3000/S	2750	2200	3000	2400	528	QSK78-G9	18	ECM	T	12192*3000*3000	26000	3500
WCS3760/S	3250	2600	3762	3010	645	QSK95-G4	16	ECM	T	12192*3000*3000	29000	5000

<1>The first column of model types, consist of two models, with "WPS100/S" as an example, WPS100 is an open set, and WPS100S is soundproof; <2> Also available in the following voltages: 440/254V-220/127V-208/120V; <3> ESP: Standby Power Standby duty, operation under variable load, without over load; <4> PRP: Prime Power-Continuous duty operation, under variable load 24/24-10% over load permissible 1hour/12hour; <5> M: Mechanical speed governor, E/ECU: Electronic speed governor; <6> NA: Naturally aspirated, TC: Turbocharged, TCA: Turbocharged and air-air aftercooled, TW: Water-cooled Turbocharged; <7> The weights are approximate and without fuel; <8> This data is standard generator dimension and fuel tank capacity, just for reference only; NTOES: PowerLink reserves the right to make change technical specification .color .configuration and accessories without prior notice. Please contact your sales before ordering.

RP & RK Series | 6.6-2250kVA



RK Series, Three-phase 50Hz.1500RPM

Model Type<1>	Specification 50Hz 400/230V<2>					Engine Specification				Soundproof Sets		
	Power (kVA)		Power (kW)		Cons. (100%load) (L/h)	Engine Model	Cyl.	Gov.<5>	Asp.<6>	Dimensions<8> L*W*H (mm)	Weight (Kg)<7>	Tank (L)
	PRP<4>	ESP<3>	PRP<4>	ESP<3>								
GMS6KS	7	7	5	6	2.1	D905-BG	3	Mech	N	1790*760*1257	586	80
GMS10KS	10	11	8	9	3.5	D1105-BG	3	Mech	N	1942*877*1290	623	100
GMS15KS	15	17	12	13	3.9	D1703-BG	3	Mech	N	2042*1026*1353	885	100
GMS20KS	20	22	16	18	5.5	V2203-BG	4	Mech	N	2192*963*1323	947	140
GMS30KS	30	33	24	26	7.7	V3300-BG	4	Mech	N	2338*1115*1555	1175	180
GMS45KS	45	50	36	40	10.7	V3800DI-T-BG	4	Mech	T	2508*1081*1709	1404	180

Specification and Configuration

RP Series, Three-phase 50Hz.1500RPM

Model Type<1>	Specification 50Hz 400/230V<2>					Engine Specification				Open Sets		Soundproof Sets		
	Power (kVA)		Power (kW)		Cons. (100%load) (L/h)	Engine Model	Cyl.	Gov.<5>	Asp.<6>	Dimensions<8> L*W*H (mm)	Weight (Kg)<7>	Dimensions<8> L*W*H (mm)	Weight (Kg)<7>	Tank (L)
	PRP<4>	ESP<3>	PRP<4>	ESP<3>										
GMS15PX/S/S	15	17	12	13	3.3	4D2.3CG	4	Mechanical	N	1493*629*1119	516	2132*927*1303	873	100
GMS20PX/S/S	20	22	16	18	5.7	4D2.7CG	4	Mechanical	N	1656*630*1216	546	2292*830*1346	1023	140
GMS30PX/S/S	30	33	24	26	7.6	4D3.2CG	4	Mechanical	N	1761*700*1316	810	2188*1080*1359	1156	180
GMS45PX/S/S	45	50	36	40	7.6	4DT3.2ECG	4	EFC	T	1896*786*1384	913	2550*1081*1749	1683	180
GMS70PX/S/S	70	77	56	62	8.4	4D4.6TAG	4	EFC	T	2233*870*1342	1115	3162*1172*1971	2120	180
GMS90PX/S/S	90	99	72	79	11.5	4D4.8TAG1	4	EFC	T	2171*870*1365	1261	3142*1212*1712	2064	180
GMS110PX/S/S	110	121	88	97	14.4	4D4.8TAG2	4	EFC	T	2171*870*1365	1261	3142*1215*1719	2070	240
GMS125PX/S/S	125	138	100	110	15.84	4D4.8TAG3	4	EFC	T	2602*845*1453	1625	3312*1122*1974	2223	240
GMS165PX/S/S	165	182	132	145	20.2	6D7.1TAG1	6	EFC	T	2690*832*1506	1683	3438*1300*1868	2629	420
GMS200PX/S/S	200	220	160	176	26.1	6D8.8TAG	6	EFC	T	2714*851*1506	1820	3588*1322*1840	2693	420
GMS250PX/S/S	250	275	200	220	36.1	6D9.7TAG	6	EFC	T	3026*1117*1804	2247	3662*1322*1958	2872	520
GMS325PX/S/S	325	358	260	286	45.1	6D11.6TAG1	6	EFC	T	3437*1210*2150	3134	4422*1515*2382	4810	700
GMS375PX/S/S	375	413	300	330	54.1	6D11.6TAG2	6	EFC	T	3620*1210*2150	3271	4422*1515*2412	4852	800
SC360/S	365	400	326	356	75	DC13.072A	6	ECU	T	3437*1210*2150	3134	4240*1420*2500	8500	800
SC400/S	410	455	365	403	85	DC13.072A	6	ECU	T	3620*1210*2150	3271	4240*1420*2500	9050	800
SC500/S	500	550	438	480	106	DC13.072A	6	ECU	T	3888*1167*2144	3877	4595*1525*2555	9450	1020
SC640/S	640	709	558	614	122	DC16.093A	8	ECU	T	3801*1536*2279	4687	4695*1725*2555	9600	1650
SC750/S	750	800	600	660	148	S6R2-PTAA-C	6	EFC	T	5462*2096*2664	9867	5200*1725*2556	9800	1450
PE1000/S	1000	1100	800	880	220	4008TAG2	8	EFC	T	5112*2134*2445	6599	5400*1725*2556	10200	1450
ME1250/S	1250	1375	1000	1100	235	S12R-PTA-C	12	EFC	T	5090*2100*2425	9618	6058*2438*2591	12500	1070
ME1500/S	1500	1650	1200	1320	317	S12R-PTAA2-C	12	EFC	T	5333*2200*2441	10132	12192*2438*2896	15600	2400
ME1875/S	1875	2000	1500	1600	358	S16R-PTA2-C	16	EFC	T-W	5586*2208*2576	13199	12192*2438*2896	17500	2400
ME2000/S	2000	2250	1600	1800	382	S16R-PTAA2-C	16	EFC	T-A	6283*2378*2571	13550	12192*2438*2896	24800	2400
ME2250/S	2250	2500	1800	2000	464	S16R2-PTAW-C	16	EFC	T-A	6500*2877*2600	13860	12192*2438*2896	25200	2400

RP Series, Single-phase 50Hz.1500RPM

Model Type<1>	Specification 50Hz 400/230V<2>					Engine Specification				Open Sets		Soundproof Sets		
	Power (kVA)		Power (kW)		Cons. (100%load) (L/h)	Engine Model	Cyl.	Gov.<5>	Asp.<6>	Dimensions<8> L*W*H (mm)	Weight (Kg)<7>	Dimensions<8> L*W*H (mm)	Weight (Kg)<7>	Tank (L)
	PRP<4>	ESP<3>	PRP<4>	ESP<3>										
P10/S	10	11	8	9	2.8	3D1.4CG	3L	M	NA	1360*630*1080	400	1932*928*1309	764	100
P12/S	12	13	10	11	3.3	3D1.5CG	3L	M	NA	1440*630*1120	490	1862*880*1308	762	100
P15/S	15	17	12	13	4.8	4D2.3CG	4L	M	NA	1440*630*1120	490	2132*927*1303	853	100
P20/S	20	22	16	18	5.7	4D2.7CG	4L	M	NA	1560*650*1215	565	2338*1080*1358	1191	165
P30/S	30	33	24	26	7.6	4D3.2CG	4L	M	NA	1895*700*1400	730	2188*1080*1508	1175	150
P42/S	42	47	34	37	9.7	4D5.0CG	4L	M	NA	1880*800*1380	880	2688*1080*1748	1596	360
P60/S	60	66	48	53	13.9	4DT4.6CG	4L	M	TC	1880*800*1380	890	2688*1113*1758	1757	360

RK Series, Single-phase 50Hz.1500RPM

Model Type<1>	Specification 50Hz 400/230V<2>					Engine Specification				Soundproof Sets		
	Power (kVA)		Power (kW)		Cons. (100%load) (L/h)	Engine Model	Cyl.	Gov.<5>	Asp.<6>	Dimensions<8> L*W*H (mm)	Weight (Kg)<7>	Tank (L)
	PRP<4>	ESP<3>	PRP<4>	ESP<3>								
PK6.6S	7	7	5	6	2.1	D905-BG	3	Mech	N	1790*760*1257	586	80
PK10S	10	11	8	9	3.5	D1105-BG	3	Mech	N	1942*877*1290	623	100
PK15S	15	17	12	13	3.9	D1703-BG	3	Mech	N	2042*1063*1353	921	140
PK20S	20	22	16	18	5.5	V2203-BG	4	Mech	N	2192*963*1323	947	140
PK30S	30	33	24	26	7.7	V3300-BG	4	Mech	N	2338*1115*1554	1174	180
PK45S	45	50	36	40	10.7	V3800DI-T-BG	4	Mech	T	2508*1081*1709	1404	180

<1>The first column of model types, consist of two models, with "WPS100/S" as an example, WPS100 is an open set, and WPS100S is soundproof; <2> Also available in the following voltages: 440/254V-220/127V-208/120V; <3> ESP: Standby Power Standby duty, operation under variable load, without over load; <4> PRP: Prime Power-Continuous duty operation, under variable load 24/24-10% over load permissible 1hour/12hour; <5> M: Mechanical speed governor, E/ECU: Electronic speed governor; <6> NA: Naturally aspirated, TC: Turbocharged, TCA: Turbocharged and air-air aftercooled; TW: Water-cooled Turbocharged; <7> The weights are approximate and without fuel; <8> This data is standard generator dimension and fuel tank capacity, just for reference only; NTOES: PowerLink reserves the right to make change technical specification .color .configuration and accessories without prior notice. Please contact your sales before ordering.

T3 Series 60-750kVA



Specification and Configuration

Three-phase 50Hz.1500RPM

Model Type ^{<1>}	Specification 50Hz 400/230V ^{<2>}					Engine Specification				Soundproof Sets		
	Power (kVA)		Power (kW)		Cons. (100%load) (L/h)	Engine Model	Cyl.	Gov. ^{<5>}	Asp. ^{<6>}	Dimensions ^{<8>} L*W*H (mm)	Weight (Kg) ^{<7>}	Tank (L)
	PRP ^{<4>}	ESP ^{<3>}	PRP ^{<4>}	ESP ^{<3>}								
T60X/S	60	66	48	38	13.9	QSE3.2-G2	4	ECU	TA	2338*1080*1551	1331	180
T100X/S	100	110	80	64	22.1	QSE4.3-G2	4	ECU	TA	3142*1212*1712	2064	240
T125X/S	125	138	100	80	22.1	QSE4.3-G3	4	ECU	TA	3312*1122*1974	2223	420
T175X/S	175	193	140	112	36.1	QSE6.5-G2	6	ECU	TA	3438*1300*1868	2629	420
T200X/S	200	220	160	128	36.1	QSE6.5-G3	6	ECU	TA	3588*1322*1840	2693	420
T250X/S	250	275	200	160	59.4	QSE9-G3	6	ECU	TA	3662*1322*1958	2872	520
T312X/S	313	344	250	200	70	QSE12-G2	6	ECU	TA	4242*1464*2312	4559	800
T375X/S	375	375	300	240	83	QSE12-G3	6	ECU	TA	4100*1464*2305	4549	800
T500X/S	500	500	400	320	113.8	QSE16-G2	6	ECU	TA	4592*1535*2555	5265	1020
T625X/S	625	625	500	400	144.4	QSE19-G2	6	ECU	TA	4692*1763*2516	6482	1450
T750X/S	750	750	600	480	166.4	QSE19-G3	6	ECU	TA	6058*2438*2795	12949	1450

RG Series 10-1250kVA



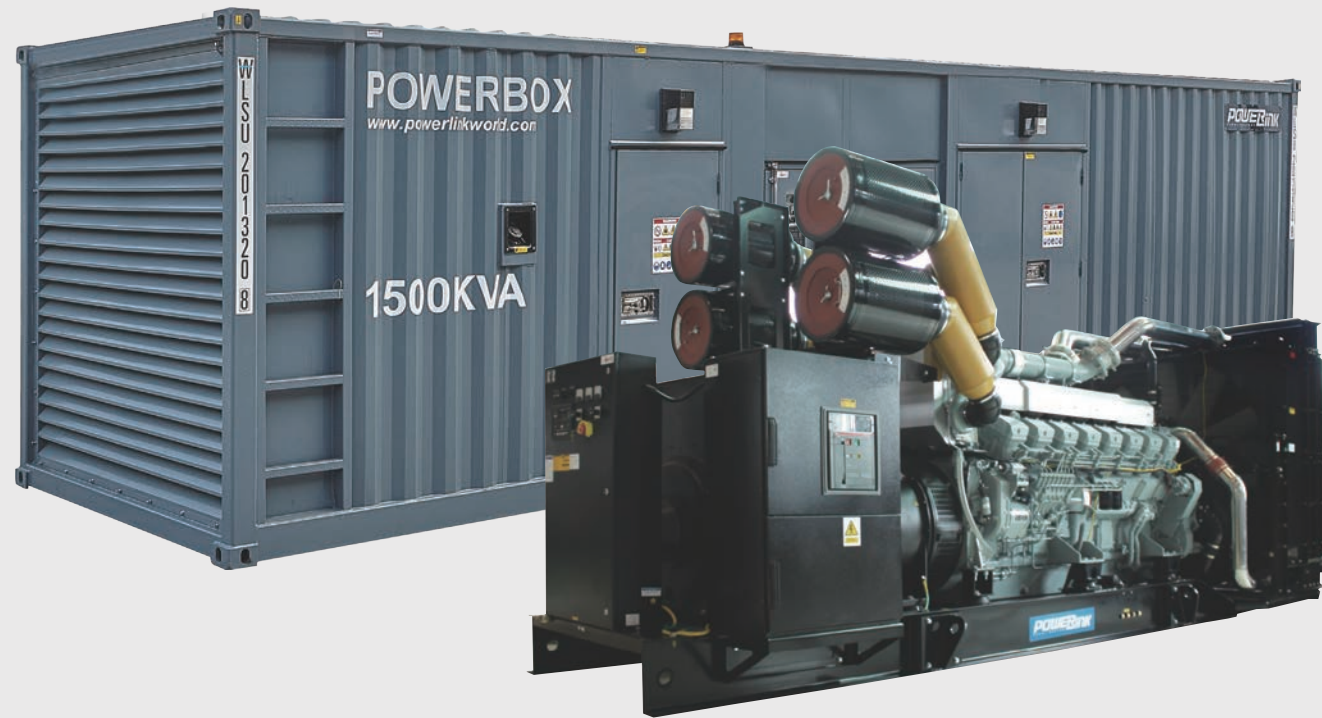
Specification and Configuration

Three-phase 50Hz.1500RPM

Model Type<1>	Specification 50Hz 400/230V<2>					Engine Specification				Soundproof Sets		
	Power (kVA)		Power (kW)		Cons. (100%load) (L/h)	Engine Model	Cyl.	Gov.<5>	Asp.<6>	Dimensions<8> L*W*H (mm)	Weight (Kg)<7>	Tank (L)
	PRP<4>	ESP<3>	PRP<4>	ESP<3>								
PK10S	10	11	8	8.8	3.5	D1105-BG	3	Mech	N	1942*877*1290	623	100
PK14S	14	15	11	12	3.9	D1703-E3BG	3	Mech	N	2042*1026*1353	885	130
PK15S	15	17	12	13	3.9	D1703-E3BG	3	Mech	N	2042*1026*1353	885	130
GMS20KS	20	22	16	18	5.5	V2203-E3BG	4	Mech	N	2242*1026*1353	1021	140
GMS30KS	30	33	24	26	7.7	V3300-E3BG	4	Mech	N	2550*1030*1464	1175	240
GMS45KS	45	50	36	40	10.7	V3800-T E3BG	4	Mech	T	2588*1081*1702	1400	240
WPS50S	50	55	40	44	18.7	1104D-44TG2	4	ECU	T	2300*1115*1700	1413	320
WPS60S	60	66	48	53	18.7	1104D-44TG2	4	ECU	T	2300*1115*1701	1415	320
WPS80S	80	88	64	70	18.6	1104D-E44TAG1	4	ECU	T	2788*1165*1900	1831	530
WPS100S	100	110	80	88	22.6	1104D-E44TAG2	4	ECU	T	2888*1171*900	1979	560
WPS135S	135	149	108	119	33.4	1106D-E70TAG2	6	ECU	T	3338*1262*2153	2659	800
WPS150S	150	165	120	132	41.6	1106D-E70TAG3	6	ECU	T	3518*1222*2153	2759	1087
WPS180S	180	198	144	158	45.8	1106D-E70TAG4	6	ECU	T	3518*1222*2050	2947	1087
WPS200S	200	220	160	176	45	1206D-E70TAG1	6	ECU	T	3518*1222*2153	2976	1087
WPS250S	250	275	200	220	54	1206D-E70TAG3	6	ECU	T	3840*1362*2302	3528	1300
WPS350S	350	385	280	308	85	2206D-E13TAG3	6	ECU	T	4242*1613*2476	4654	1650
WPS400S	400	440	320	352	85	2206D-E13TAG3	6	ECU	T	4242*1614*2476	4784	1650
WCS250S	250	220	200	176	56	QSL8.9-G4	6	ECU	T	3662*1322*2262	3141	1300
WCS300S	300	275	240	220	61	QSL9-G7	6	ECU	T	4242*1423*2426	4773	1450
WCS400S	400	330	320	264	77	QSL9-G7	6	ECU	T	4422*1515*2571	4909	1650
SC250S	250	275	200	220	64.9	DC09 071A	6L	ECU	T	3662*1322*2262	3141	1300
SC300S	300	330	240	264	64.9	DC09 071A	6L	ECU	T	4242*1423*2426	4773	1450
SC400S	400	440	320	352	85	DC13 071A	6L	ECU	T	4422*1515*2571	4909	1650
WPS500S	500	550	400	440	106	2506C-E15TAG2	6	ECU	T	4586*1564*2556	5396	1650
WCS500S	500	550	400	440	95.9	QSL9-G8	6	ECU	T	4512*1563*2566	5937	1650
SC500S	500	550	400	440	122	DC13 072A	6	ECU	T	4512*1563*2566	5937	1650
WPS650S	650	715	520	572	132	2806A-E18TAG2	6	ECU	T	4701*1749*2617	6653	1650
WCS1100S	1000	1100	800	880	212	QST30-G4	12	ECU	T	6058*2438*2795	13021	1450
WCS1400S	1250	1375	1000	1100	271	QSK38-G5	12	ECU	T	6058*2438*2795	15310	1450
PK10ST	10	11	8	9	3.5	D1105-E3BG	3	Mech	N	1942*877*1290	623	100
PK14ST	14	15	11	12	3.9	D1703-E3BG	3	Mech	N	2042*1026*1353	885	130
PK15ST	15	17	12	13	3.9	D1703-E3BG	3	Mech	N	2042*1026*1353	885	130
GMS20KST	20	22	16	18	5.5	V2203-E3BG	4	Mech	N	2192*963*1323	947	140
GMS30KST	30	33	24	26	7.7	V3300-E3BG	4	Mech	N	2338*1115*1555	1175	180
WPS60ST	60	66	48	53	18.7	1104D-44TG2	4	ECU	T	2300*1115*1701	1415	320
WPS80ST	80	88	64	70	18.6	1104D-E44TAG1	4	ECU	T	2788*1165*1900	1831	530
WPS100ST	100	110	80	88	22.6	1104D-E44TAG2	4	ECU	T	2888*1171*900	1979	560

<1>The first column of model types, consist of two models, with "WPS100/S" as an example, WPS100 is an open set, and WPS100S is soundproof; <2> Also available in the following voltages: 440/254V-220/127V-208/120V; <3> ESP: Standby Power Standby duty, operation under variable load, without over load; <4> PRP: Prime Power-Continuous duty operation, under variable load 24/24-10% over load permissible 1hour/12hour; <5> M: Mechanical speed governor, E/ECU: Electronic speed governor; <6> NA: Naturally aspirated, TC: Turbocharged, TCA: Turbocharged and air-air aftercooled; TW: Water-cooled Turbocharged; <7> The weights are approximate and without fuel; <8> This data is standard generator dimension and fuel tank capacity, just for reference only; NTOES: PowerLink reserves the right to make change technical specification, color, configuration and accessories without prior notice. Please contact your sales before ordering.

EM Series 1000-2045kVA



Specification and Configuration

Three-phase 50Hz.1500RPM

Model Type<1>	Specification 50Hz 400/230V<2>				Cons. (100%load) (L/h)	Engine Specification				Open Sets		Soundproof Sets		
	Power (kVA)		Power (kW)			Engine Model	Cyl.	Gov.<5>	Asp.<6>	Dimensions<8> L*W*H (mm)	Weight (Kg)<7>	Dimensions<8> L*W*H (mm)	Weight (Kg)<7>	Tank (L)
WMS1000/S	1000	1100	800	880	223	S12H-PTA	12V	E	TC	4716*2006*2301	7501	6058*2438*2591	12510	1450
WMS1275/S	1290	1425	1032	1140	265	S12R-PTA	12V	E	TC	4766*2056*2293	7851	6058*2438*2591	15310	1500
WMS1500/S	1500	1650	1200	1320	304	S12R-PTAA2	12V	E	TC	5531*2108*2562	11576	6058*2438*2591	16840	2000
WMS1725/S	1728	1900	1382	1520	351	S16R-PTA	16V	E	TC	5900*2290*2700	14554	12192*2438*2896	21149	2000
WMS2045/S	2045	2250	1636	1800	399	S16R-PTAA2	16V	E	TC	6146*2202*2567	17347	12192*2438*3159	24088	2800

<1>The first column of model types, consist of two models, with "WPS100/S" as an example, WPS100 is an open set, and WPS100S is soundproof; <2> Also available in the following voltages: 440/254V-220/127V-208/120V; <3> ESP: Standby Power Standby duty, operation under variable load, without over load; <4> PRP: Prime Power-Continuous duty operation, under variable load 24/24-10% over load permissible 1 hour/12hour; <5> M: Mechanical speed governor, E/ECU: Electronic speed governor; <6> NA: Naturally aspirated, TC: Turbocharged, TCA: Turbocharged and air-air aftercooled; TW: Water-cooled Turbocharged; <7> The weights are approximate and without fuel; <8> This data is standard generator dimension and fuel tank capacity, just for reference only; NTOES: PowerLink reserves the right to make change technical specification .color .configuration and accessories without prior notice. Please contact your sales before ordering.

HV Series 1250-3100kVA



Specification and Configuration

Three-phase 50Hz.1500RPM

Model Type<1>	Specification 50Hz 400/230V<2>					Engine Specification				Soundproof Sets		
	Power (kVA)		Power (kW)		Cons. (100%load) (L/h)	Engine Model	Cyl.	Gov.<5>	Asp.<6>	Dimensions<8> L*W*H (mm)	Weight (Kg)<7>	Tank (L)
	PRP<4>	ESP<3>	PRP<4>	ESP<3>								
HVM1290/S	1290	1425	1032	1140	235	S12R-PTA-C	12	EFC	TA	12192*2438*2896	20579	1450
HVM1500/S	1500	1650	1200	1320	317	S12R-PTAA2-C	12	EFC	TA	12192*2438*2896	21149	1450
HVM1728/S	1728	1900	1382	1520	351	S16R-PTA-C	16	EFC	TA	12192*2438*2896	24500	1450
HVM2045/S	2045	2250	1636	1800	415	S16R-PTAA2-C	16	EFC	TA	12192*2438*2896	24689	1450
HVP1250/S	1250	1375	1000	1100	259	4012-46TWG2A	12	EFC	TA	12192*2438*3153	19811	1450
HVP1500/S	1500	1650	1200	1320	301	4012-46TAG2A	12	EFC	TA	12192*2438*2896	20579	1450
HVP1710/S	1710	1881	1368	1505	370	4012-46TAG3A	12	EFC	TA	12192*2438*2896	21149	2400
HVP1850/S	1850	2035	1480	1628	381	4016-61TRG1	16	EFC	TA	12192*2438*2896	24600	2400
HVP2000/S	2000	2200	1600	1760	385	4016-61TRG2	16	EFC	TA	12192*2438*2896	24689	2400
HVP2250/S	2250	2500	1800	2000	473	4016-61TRG3	16	EFC	TA	12192*2438*2896	25000	2400
HVC1275/S	1275	1400	1020	1120	261	KTAS0-G3	16	EFC	TA	12192*2438*2896	15843	1450
HVC1500/S	1500	1675	1200	1340	309	KTAS0G58	16	EFC	TA	12192*2438*2896	16840	1450
HVC1600/S	1601	1843	1474	1601	375	QSK60-G12	16	ECM	TA	12192*2438*2896	26000	2400
HVC1875/S	1875	2063	1500	1650	363	QSK60-G3	16	ECM	TA	12192*2438*2896	26000	2400
HVC2045/S	2045	2250	1636	1800	394	QSK60-G4	16	ECM	TA	12192*2438*2896	26000	2400
HVC2750/S	2750	3000	2200	2400	528	QSK78-G9	18	ECM	TA	12192*2438*2896	26000	2400
HVC3360/S	3362	3762	2690	3010	645	QSK95-G4	16	ECM	TA	12192*2438*2896	26000	2400
HVC1400/S	1400	1540	1120	1232	301	QSK50-G3	16	ECM	TA	6058*2438*2591	15470	1450
HVC1540/S	1540	1700	1232	1360	330	QSK50-G4	16	ECM	TA	12192*2438*2896	26000	1450
HVC1650/S	1650	1825	1320	1460	341	QSK50-G7	16	ECM	TA	12192*2438*2896	26000	1450
HVC1829/S	1829	2008	1463	1606	399	QSK60-G12	16	ECM	TA	12192*2438*2896	26000	1450
HVC2000/S	2003	2254	1602	1803	399	QSK60-G13	16	ECM	TA	12192*2438*2896	26000	1450
HVC2750/S	2750	3000	2200	2400	550	QSK78-G15	16	ECM	TA	12192*3000*3000	30000	1450
HVC3100/S	3126	3500	2500	2800	658	QSK95-G5	16	ECM	TA	12192*3000*3000	30000	1450
HVM1290/S	1290	1425	1032	1140	235	S12R-PTA-C	12	EFC	TA	12192*2438*2896	20579	1450
HVM1500/S	1500	1650	1200	1320	317	S12R-PTAA2-C	12	EFC	TA	12192*2438*2896	21149	1450
HVM1728/S	1728	1900	1382	1520	351	S16R-PTA-C	16	EFC	TA	12192*2438*2896	24500	1450
HVM2045/S	2045	2250	1636	1800	415	S16R-PTAA2-C	16	EFC	TA	12192*2438*2896	24689	1450
HVP1250/S	1250	1375	1000	1100	259	4012-46TWG2A	12	EFC	TA	12192*2438*3153	19811	1450
HVP1500/S	1500	1650	1200	1320	301	4012-46TAG2A	12	EFC	TA	12192*2438*2896	20579	1450
HVP1710/S	1710	1881	1368	1505	370	4012-46TAG3A	12	EFC	TA	12192*2438*2896	21149	2400
HVP1850/S	1850	2035	1480	1628	381	4016-61TRG1	16	EFC	TA	12192*2438*2896	24600	2400
HVP2000/S	2000	2200	1600	1760	385	4016-61TRG2	16	EFC	TA	12192*2438*2896	24689	2400
HVP2250/S	2250	2500	1800	2000	473	4016-61TRG3	16	EFC	TA	12192*2438*2896	25000	2400
HVC1275/S	1275	1400	1020	1120	261	KTAS0-G3	16	EFC	TA	12192*2438*2896	15843	1450
HVC1500/S	1500	1675	1200	1340	309	KTAS0G58	16	EFC	TA	12192*2438*2896	16840	1450
HVC1600/S	1601	1843	1474	1601	375	QSK60-G12	16	ECM	TA	12192*2438*2896	26000	2400
HVC1875/S	1875	2063	1500	1651	363	QSK60-G3	16	ECM	TA	12192*2438*2896	26000	2400
HVC2045/S	2045	2250	1636	1800	394	QSK60-G4	16	ECM	TA	12192*2438*2896	26000	2400
HVC2750/S	2750	3000	2200	2400	528	QSK78-G9	18	ECM	TA	12192*3000*3000	30000	2400
HVC3360/S	3362	3762	2690	3010	645	QSK95-G4	16	ECM	TA	12192*3000*3000	30000	2400
HVC1400/S	1400	1540	1120	1232	301	QSK50-G3	16	ECM	TA	6058*2438*2591	15470	1450
HVC1540/S	1540	1700	1232	1360	330	QSK50-G4	16	ECM	TA	12192*2438*2896	26000	1450
HVC1650/S	1650	1825	1320	1460	341	QSK50-G7	16	ECM	TA	12192*2438*2896	26000	1450
HVC1829/S	1829	2008	1463	1606	399	QSK60-G12	16	ECM	TA	12192*2438*2896	26000	1450
HVC2000/S	2006	2254	1602	1803	399	QSK60-G13	16	ECM	TA	12192*2438*2896	26000	1450
HVC2750/S	2750	3000	2200	2400	550	QSK78-G15	16	ECM	TA	12192*3000*3000	30000	1450
HVC3100/S	3126	3500	2500	2800	658	QSK95-G5	16	ECM	TA	12192*3000*3000	30000	1450

<1> <2> M:300-6600V H:10000-11000V; <3> ESP: Standby Power Standby duty, operation under variable load, without over load; <4> PRP: Prime Power-Continuous duty operation, under variable load 24/24-10% over load permissible 1hour/12hour; <5> M: Mechanical speed governor; E/ECU: Electronic speed governor; <6> NA: Naturally aspirated, TC: Turbocharged, TCA: Turbocharged and air-air aftercooled; TW: Water-cooled Turbocharged; <7> The weights are approximate and without fuel; <8> This data is standard generator dimension and fuel tank capacity, just for reference only; NTOES: PowerLink reserves the right to make change technical specification, color, configuration and accessories without prior notice. Please contact your sales before ordering.

PARTS

We provide All here at PowerLink

PowerLink stock of spare parts, which is packaged and stored in our modernised warehouse, constantly being monitored by our advanced stock management system. With this attention to detail we can ensure you a prompt response to your needs with improved lead times on all our spare parts. PowerLink's on-line parts solution platform allows users the freedom to access the spare parts division in order to provide you with the best solutions in the most efficient manner. The following parts are regularly stocked for your convenience: **Engine maintenance spare parts, alternator spares, control modules, ATS, genset parts and maintenance tools.** Purchase all of our spare parts directly from the manufactures we deal with to ensure all our parts are **100% genuine.**

